

# MVSS 36 STAINLESS STEEL ELECTRIC VIBRATOR SERIES

three-phase

2 poles		
Hz	50	60
RPM	3000	3600



DESCRIPTION					MECHANICAL FEATURES						ELECTRICAL FEATURES			
Part Number	Model	Design	Frame Size	SB	Static Moment* in-lbs		Centrifugal Force lbs		Weight lbs		Power Output HP		Max Current A	
					50 Hz	60 Hz	50 Hz	60 Hz	50 Hz	60 Hz	50 Hz	60 Hz	400 V 50 Hz	460 V 60 Hz
600328	MVSS 36-380	S02	00	•	1.0	1.0	266	383	17.2	17.2	0.18	0.18	0.35	0.30
600329	MVSS 36-480	S02	01	•	1.8	1.3	464	480	18.0	17.6	0.18	0.18	0.35	0.30
600330	MVSS 36-660	S02	10	•	2.6	1.8	669	653	27.5	26.4	0.24	0.26	0.60	0.50
600331	MVSS 36-1050	S02	20	•	4.3	2.8	1107	1036	40.7	38.5	0.44	0.53	0.80	0.75
600515	MVSS 36-1660	S08	30	•	6.8	4.5	1727	1659	55.0	52.8	0.67	0.7	1.10	1.00
600333	MVSS 36-2530	S02	35	•	9.6	6.3	2431	2334	66.0	63.8	1.1	1.2	1.75	1.75
600334	MVSS 36-3280	S02	40	•	13.3	8.9	3399	3263	87.1	83.6	1.5	1.9	2.30	2.00
600335	MVSS 36-4100	S02	50	•	17.8	11.1	4530	4077	107	102	2.2	2.2	3.50	3.00

For 230 V, 60 Hz amperage, double the 460 V, 60 Hz amperage.



Approval for European Directive 94/9/EC: ATEX II2D, tD A21 IP66, available upon request.



All listed products are in compliance with GOST R 50615, GOST 17770, GOST 12.2.030, GOST R 51318.14.1-14.2, GOST R 51317.3.2-3.3.



In compliance with all applicable European Directives.

## single-phase

DESCRIPTION					MECHANICAL FEATURES						ELECTRICAL FEATURES			
Part Number	Model	Design	Frame Size	SB	Static Moment* in-lbs		Centrifugal Force lbs		Weight lbs		Power Output HP		Max Current A	
					50 Hz	60 Hz	50 Hz	60 Hz	50 Hz	60 Hz	50 Hz	60 Hz	400 V 50 Hz	460 V 60 Hz
600328	MVSS S36-380	S02	00	•	1.0	1.0	266	383	17.2	17.2	0.15	0.15	0.75	1.52
600329	MVSS S36-480	S02	01	•	1.8	1.3	464	480	18.0	17.6	0.15	0.15	0.75	1.52
600330	MVSS S36-660	S02	10	•	2.6	1.8	669	653	27.5	26.4	0.24	0.27	1.25	2.40
600331	MVSS S36-1050	S02	20	•	4.3	2.8	1107	1036	40.7	38.5	0.46	0.48	2.30	4.50
600515	MVSS S36-1660	S08	30	•	6.8	4.5	1727	1659	55.0	52.8	0.60	0.7	3.25	7.00

\* Working Moment = 2 x Static Moment. Static Moment = Unbalance.

# MVSS 36 STAINLESS STEEL ELECTRIC VIBRATOR SERIES

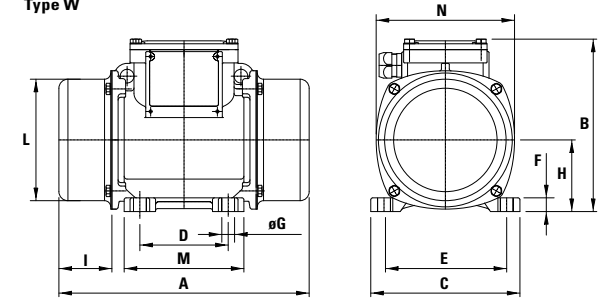
three-phase

2 poles		
Hz	50	60
RPM	3000	3600



OVERALL DIMENSIONS (inches)															
Model	Design	Type	A	B	C	D	E	Foot holes		F	H	I	L	M	N
								øG	N°						
MVSS 36-380	S02	W	8.23	5.94	4.92	2.44-2.91**	4.17	0.35	4	0.39	2.40	1.77	3.94	4.02	4.61
MVSS 36-480	S02	W	8.86	5.94	4.92	2.44-2.91**	4.17	0.35	4	0.39	2.40	2.09	3.94	4.02	4.61
MVSS 36-660	S02	W	10.04	6.93	5.98	3.54	4.92	0.51	4	0.47	2.87	2.13	4.88	4.80	5.55
MVSS 36-1050	S02	W	11.18	7.87	6.57	4.13	5.51	0.51	4	0.59	3.25	2.48	5.63	5.39	6.30
MVSS 36-1660	S08	W	12.13	8.07	8.07	4.72	6.69	0.67	4	0.67	3.68	2.48	6.61	6.30	7.17
MVSS 36-2530	S02	W	13.94	9.13	8.07	4.72	6.69	0.67	4	0.79	4.11	3.03	7.13	6.38	7.99
MVSS 36-3280	S02	W	17.24	9.65	9.06	5.51	7.48	0.67	4	0.98	4.57	4.06	7.91	7.09	8.86
MVSS 36-4100	S02	W	17.24	9.65	9.06	5.51	7.48	0.67	4	0.98	4.57	4.06	7.91	7.09	8.86

Type W



single-phase

OVERALL DIMENSIONS (inches)																	
Model	Design	Type	A	B	C	D	E	Foot holes		F	H	I	L	M	N	Capacitor (µF)	
								øG	N°							220 V 50 Hz	115 V 60 Hz
MVSS S36-380	S02	W	8.23	5.94	4.92	2.44-2.91**	4.17	0.35	4	0.39	2.40	1.77	3.94	4.02	4.61	10	28
MVSS S36-480	S02	W	8.86	5.94	4.92	2.44-2.91**	4.17	0.35	4	0.39	2.40	2.09	3.94	4.02	4.61	10	28
MVSS S36-660	S02	W	10.04	6.93	5.98	3.54	4.92	0.51	4	0.47	2.87	2.13	4.88	4.80	5.55	16	25
MVSS S36-1050	S02	W	11.18	7.87	6.57	4.13	5.51	0.51	4	0.59	3.25	2.48	5.63	5.39	6.30	12.5	50
MVSS S36-1660	S08	W	12.13	8.07	8.07	4.72	6.69	0.67	4	0.67	3.68	2.48	6.61	6.30	7.17	25	90

\*\* Slot.